

RIO MUNI BASIN

OFFSHORE EQUATORIAL GUINEA

FARM IN OPPORTUNITY

Atlas Petroleum International Ltd owns a 100% working interest in the H Block PSC, covering 991 km² in the offshore northern part of the Rio Muni Basin. To date, the company has a database of 2,800 km² of 3D seismic, with all of the block area covered. This work has resulted in the identification of the large (>500 mmbo) Aleta prospect, making this one of the largest undrilled prospects within a non-frontier basin on the West African margin.

Blocks Prospects and Leads

A variety of structural and stratigraphic traps have been mapped within the prospective Senonian (Upper Cretaceous) section. The morphology and play elements appear very similar to the producing fields in G Block (~70 km on-trend, to the south), where >500 mmbo has been discovered. A stacked series of Santonian-Turonian sands pinches out and onlaps a pre-rift high to the east and can be tested with a vertical well of ~5,000m (3,760m below mud-line). The presence of the proven Mid Albian source has been identified from the characteristic seismic response and the play is de-risked by positive AVO. Prospective resources for an individual sand are estimated at 166 mmbo, 4 sand stacked mean at 542 mmbo and an upside of 1.3 billion bo.

Follow up prospectivity is identified in the Amigo 4-way structure (La Ceiba lookalike) and updip stratigraphic traps (Paloma) and downdip (Channel Complex - Ebano lookalike).

The following points highlight the key features:

- Large prospective resources (542 mmbo mean).
- Good on-trend analogy to proven play of similar size.
- COS estimate of 33%, de-risked by positive AVO response.
- Combines well defined sand geobodies similar to G Block, with a Lower Senonian age that allows a close association with the proven underlying source (Jubilee analogy).

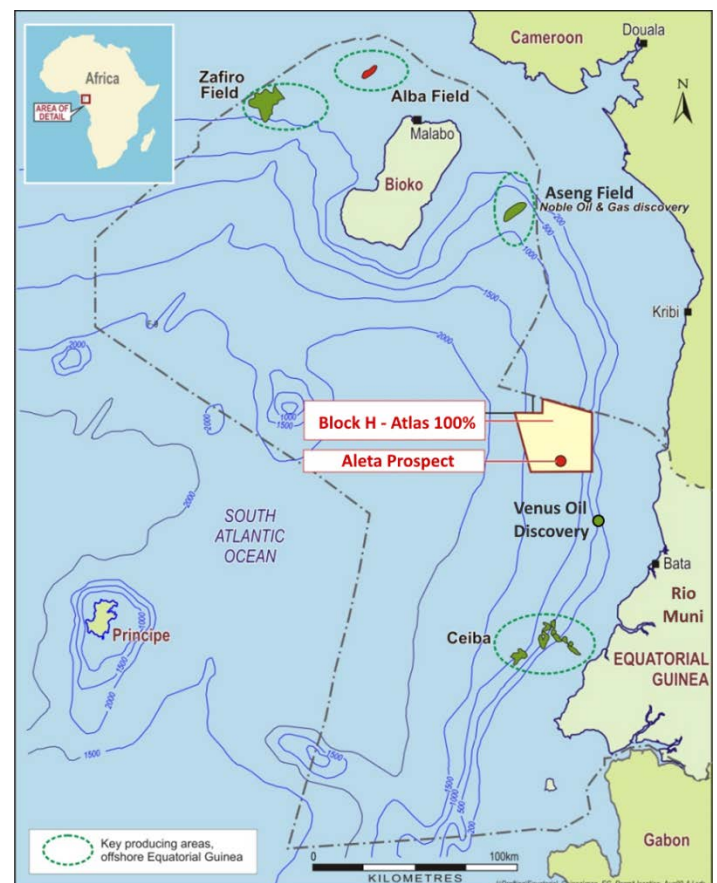
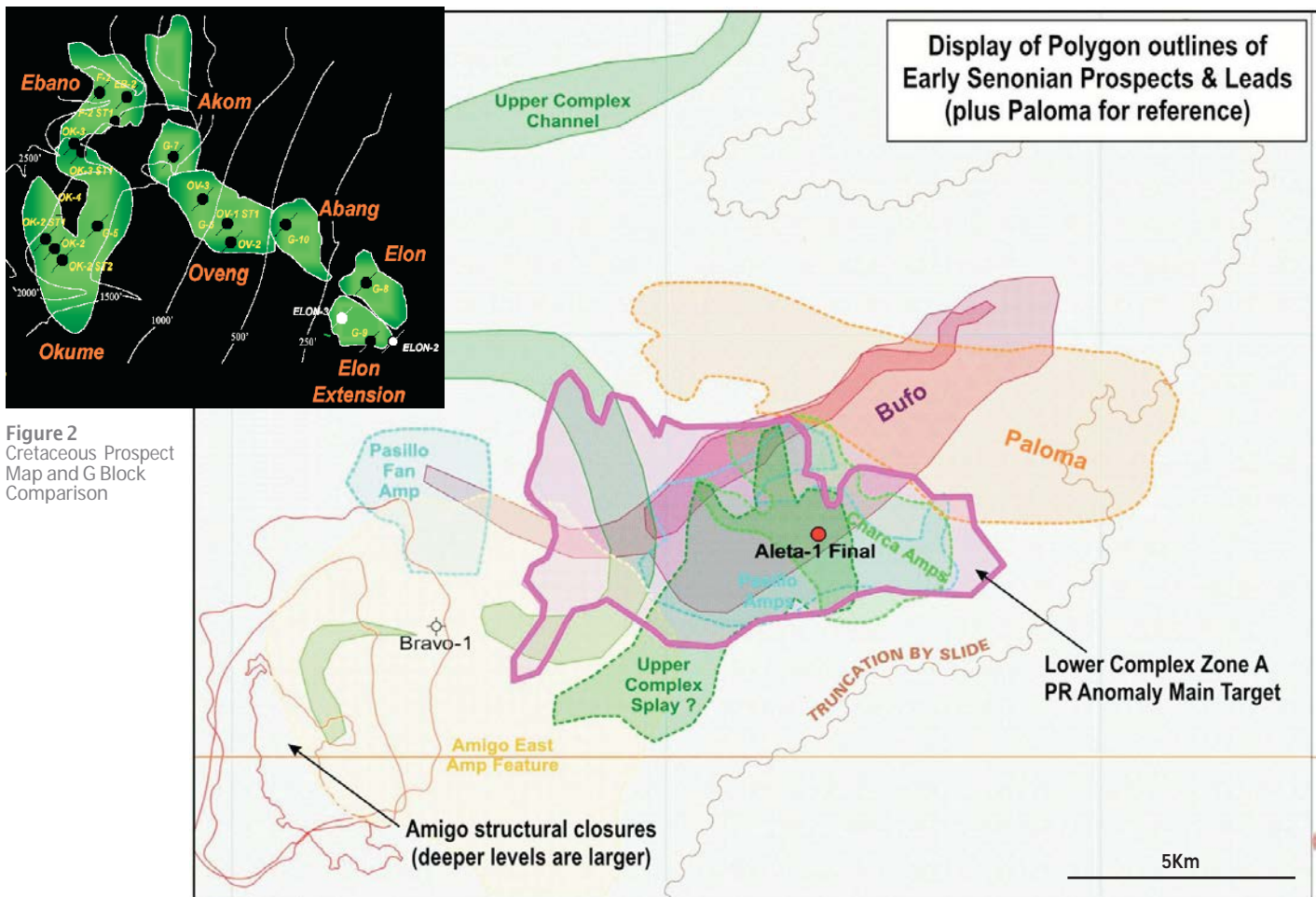


Figure 1 Location Map

- Dry hole costs of \$75-85mm (depending on mob/demob) for a 5,000m vertical well in 1,240m of water (50 days drilling).
- Block dates from earlier phase of licensing with fiscal terms which are significantly better than those available today.
- A simple ownership of Atlas 100%, allowing for ease and flexibility of farm-in arrangements. The incoming party will become technical operator.



Background

Atlas is an independently owned company, based in Abuja and London, with a large portfolio of 21 offshore licences in 10 West African countries. Atlas has been active in EG since 1999 and currently has equity in 5 blocks, including the highly successful Block I (27.5%) which has produced >130 mmbo.

Block H was initially awarded to Atlas in 1999 and the PSC terms ratified in 2000. Roc Oil (Aus) farmed in and completed a 1,403 km² 3D survey and operated the drilling of the Bravo-1 well in 2004. The latter was a Tertiary test (TD 3,200m), which proved good sand quality in the Oligo-Miocene, but isolation from the underlying Cretaceous petroleum system.

30% of the block was mandatorily relinquished in 2005 and preparations were made to drill the Aleta prospect, with Pioneer Resources farming in and becoming operator. A protracted period of legal activity then occurred, due to Pioneer's decision to exit its entire African portfolio, finally ending with their withdrawal in 2010. White Rose then farmed in to the partnership in 2012, but were forced to exit due to internal corporate reasons. With the two remaining partners, Roc and PA Resources, changing their strategies and withdrawing, Atlas is now a 100% owner of the block.

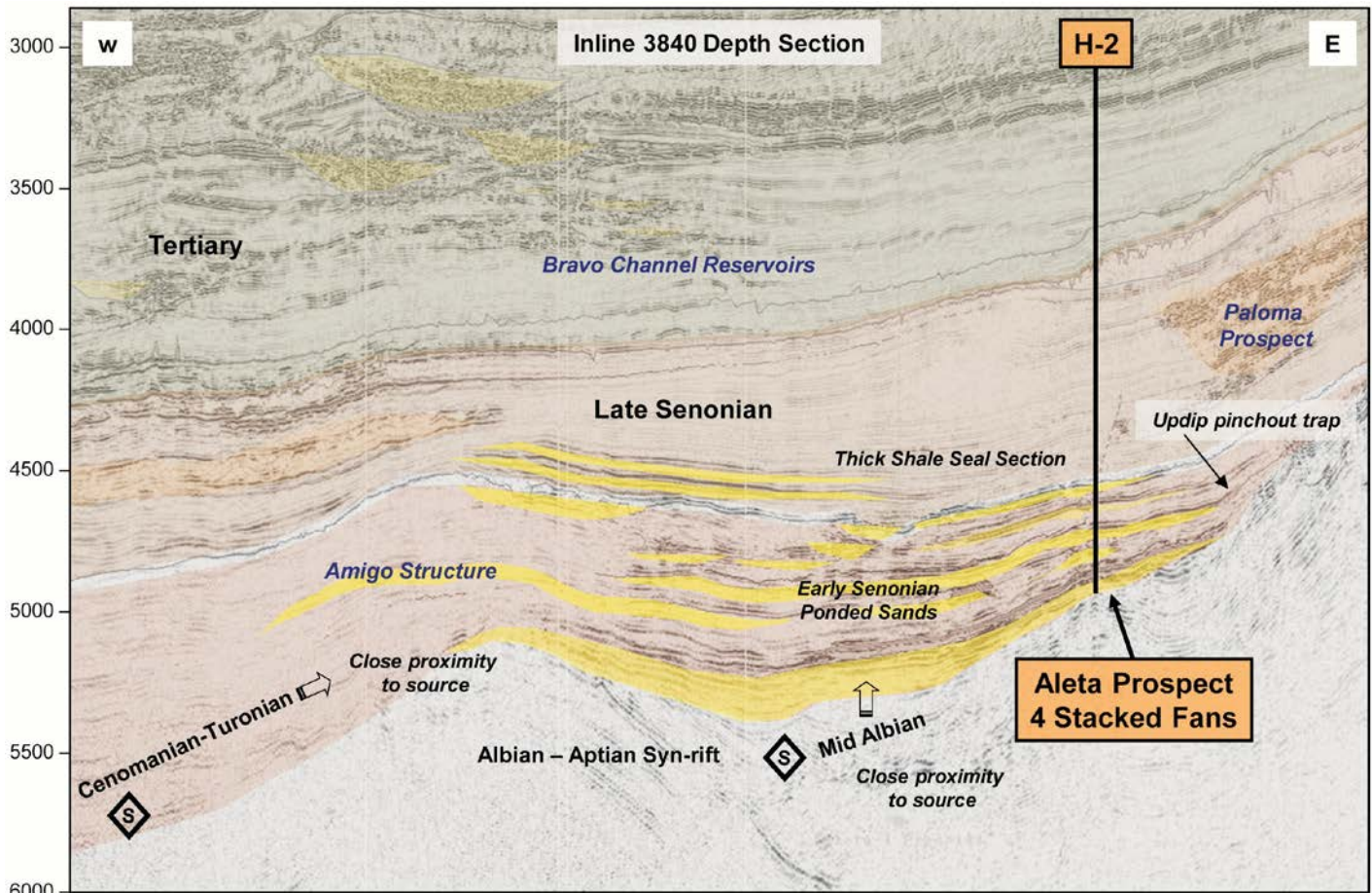


Figure 3 Geo-seismic Section Showing Petroleum System Components

Petroleum System

The Rio Muni Basin contains a thick, prospective sequence of Senonian rocks, with a Tertiary overburden which thickens from south to north. While good quality reservoirs exist both in the Tertiary and the Cretaceous, the effective petroleum play has so far been restricted to the Cretaceous. In the G Block, turbiditic, deep-water sands of Campanian age have been charged by underlying mid Albian, source rocks and trapped by overlying Maastrichtian shales and onlap onto the updip rift unconformity. The sands have a high net:gross and excellent porosities in the 24-28% range and exhibit positive Class 2 AVO when h/c filled.

In Block H, the Tertiary section has thickened to 2,000m, while the main Cretaceous sand bodies have been correlated as pre-Santonian u/c. This places them in a similar age to the Jubilee (Ghana) reservoirs. As with Jubilee, some AVO response can be observed. The extensive river system which appears to have been active in H Block from Early Senonian to Miocene times can be traced back to canyon systems in-bound in the southern Block P area (Venus discovery), similar to the G Block Okume canyon 50 km to the south.

Structuration in the basin is provided by Cretaceous aged inversion and subsequent gravity sliding and by the transcurrent movement of major fracture zones during Atlantic rifting. Block H exhibits all these, generated by the Kribi Fracture Zone, which runs SW-NE through the southern part of the block. This sets up the 4-way closed Amigo High, analogous to La Ceiba and the Aleta back basin the east.

Subsequent gravity sliding of the steepened shelf margin created the inboard high area onto which Lower Senonian sediments on-lap.

The source rock for G Block has been fingerprinted to the mid Albian, restricted marine shales, which tend to be preserved along the shelf margin, but are probably absent in the out-board, post-rift area (west of Amigo). Seismic character strongly supports their presence beneath the Aleta/Amigo back-basin, where they lie immediately below the Lower Senonian sand package and would be presently within the oil window. A further source candidate comprises the outboard Turonian/Cenomanian section, which has been proven in Ghana/Ivory Coast, but has not been penetrated by the mostly shelfal wells in EG. Nevertheless, RPS predict a significant oil-prone presence in the deeper offshore.

Planned Work Programme

The Aleta-1 well is currently planned to be drilled in 1,240m water with a TD of 5,000m. A dry-hole cost estimate of \$81mm has been based on a 50 day well, with \$500K day rate (\$1.1mm spread), contingency of 15% and mob/demob of 8 additional days.

Proposed Deal

Atlas is offering a substantial equity stake to one or more parties to pay 100% costs of the Aleta-1 well. Although there are substantial past costs associated with licence, Atlas's position allows for flexible and more advantageous terms than have recently been the case. Having been awarded in 2000, the PSC benefits from a low GePetrol carry (5%), lower income tax rates (25%), high cost recovery (65%) and generally higher profit oil splits to the contractor.

Procedure

Simco is based in London and is Atlas's designated farm-out agent for this project. Interested parties are invited to contact the London office using the details below. On completion of a Confidentiality Agreement Simco will provide a copy of the seismic data and interpretation in Kingdom or Petrel format for up to four months for an agreed fee. A kick off overview presentation can also be provided online. Interested companies may also book to visit Simco's office for physical dataroom on a Kingdom workstation for an agreed fee.

For further information, please contact:

Ellie Bell

Tel: +44(0)2088762107

Email: elliebell@simco-pet.com

DISCLAIMER

This report has been produced by Simco Petroleum (Management) Ltd of Suite A, 30 Barnes High Street, London SW13 9LW, UK, and it does not constitute an invitation to acquire an interest in the assets described and should not be treated as such. Simco shall not be liable for any errors in the contents, and any actions taken in reliance thereon. Any party wishing to take further interest in the assets should carry out its own due diligence. This document is Confidential and is only for the use of the company to whom it is provided. It may not be copied or passed on to others.

Simco is an independent international consultancy, established in 1996 and based in London, UK. Simco specialises in the upstream oil and gas sector providing advice and specialist professional support to a wide range of clients. Simco has extensive experience in the oil and gas business worldwide (see www.simco-pet.com).